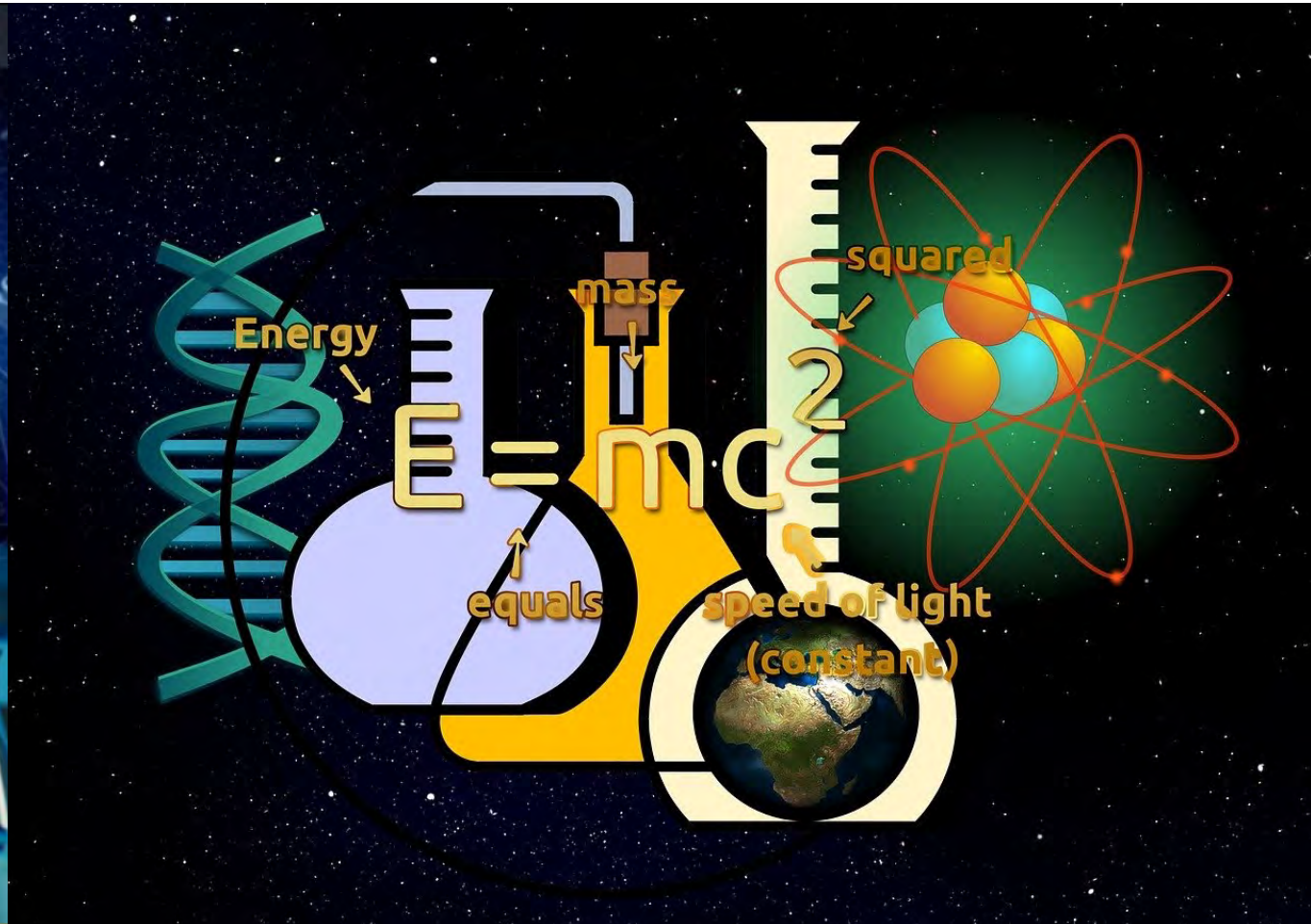


Mahabara ya sayansi

Science Lab



Nadharia ya maarifa

TOK



Kumbi la mapumziko

Aula



Ofisi ya dawati la mbele



Ofisi ya mkuu wa shule

Principal's office





Kifaransa
French





Kihispania
Spanish





Kidachi
Dutch



Kilatini Latin





michezo
sports



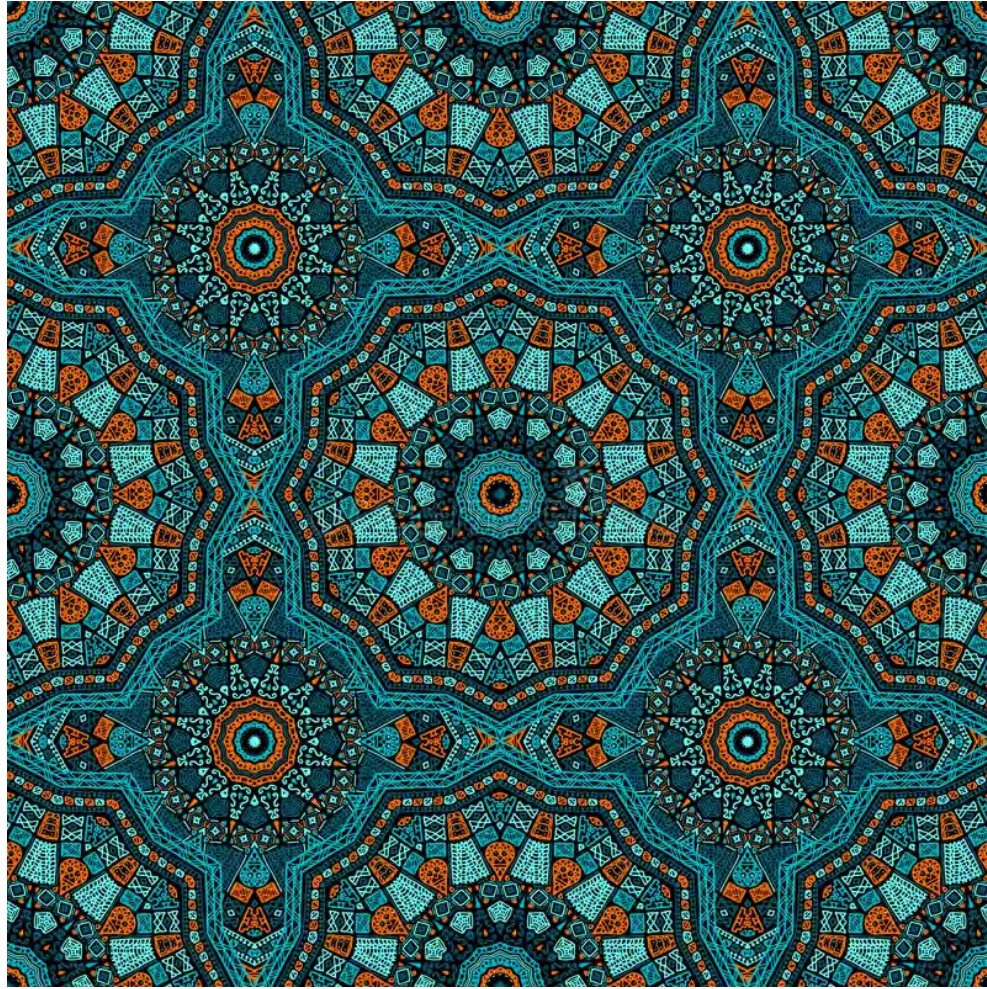
choo cha wavulana

boy's toilet



choo cha wasichana

girl's toilet



choo cha vijana
gender neutral toilet



uwanja wa michezo
playground



Karibuni kwenye shule ya msingi ya ISH

Welcome to the ISH primary school



Sanaa

WELCOME TO ART CLASS
KARIBU KWENYE
CHUMBA CHA SANAA

WELCOME TO MUSIC CLASS
KARIBU DARASA LA MUZIKI



WELCOME TO DRAMA CLASS
KARIBU DARASA LA MAIGIZO



Mchezo wa kuigiza



Simba

Karibuni
kwenye shule
ya upili ya ISH

*Welcome everyone to
ISH*



Simba


Karibuni
kwenye shule
ya upili ya ISH

*Welcome everyone to
ISH*

A close-up photograph of an elephant's head and trunk. The elephant's skin is wrinkled and grey, with some brown hair on its back. The trunk is thick and wrinkled. The background is a blurred green landscape with trees and a fence.

Tembo

Habari yenu! *Hello everyone!*



Mbogo

Habari yenu! *Hello everyone!*

A close-up photograph of a cheetah lying down in a grassy field. The cheetah's head is resting on the ground, and its pink tongue is visible, licking its fur. The cheetah's distinctive spotted pattern is clearly visible. The background is a soft-focus green field.

Chui

Habari yenu!
Hello
everyone!

Habari yenu!

Hello everyone!

Kifaru





Simba

Habari yenu!

Hello everyone!